



ALPOA Late Summer Meeting

Kocis Barn- 3060 Sumac Trail

10:00 AM August 31, 2025



ALPOA Meeting – August 31, 2025

- Agenda

1. Meeting Call to Order
2. Roll Call of Officers
3. Approve Minutes from the May 25, 2025 ALPOA Meeting
4. Treasurer's Report
5. Report of Committees
6. New Business

3. ALPOA Secretary's Report

Minutes from May 25, 2025 Meeting

Posted on ALPOA website (www.AuSableLakeMI.org).

Proposed Motion

Motion to approve the minutes from the May 25, 2025 AuSable Lake Property Owners Association meeting

4. ALPOA Treasurer's Report (08/31/2025)

Revenue		Revenue
Membership dues	\$	1,420.00
Donations May mtg	\$	120.00
Donations kids fish derby	\$	280.00
Merchandise sales	\$	1,795.00
Event fees	\$	-
Grants	\$	-
Interest (savings account)	\$	1.30
Advertising	\$	100.00
Total Revenue	\$	3,716.30
Expenses		Expenses
Web domain Registry	\$	(36.18)
Website maintenance	\$	(200.00)
Merchandise	\$	(1,076.41)
Lake Health Study (RLS)	\$	(5,000.00)
Post Office box rental	\$	(58.00)
Kids Fishing Derby	\$	(143.76)
Equipment	\$	(81.61)
Total Expense	\$	(6,595.96)
Net Revenue/Expense	\$	(2,879.66)
2025 Fund Balances		
Savings	\$	501.41
Checking	\$	4,929.68
	\$	5,431.09

Prepared by: Mark S. Dickens - CPA

5. Report of Committees

- Lake Health
- Social
- Fish



ALPOA Committee Report –

Lake Health

August 31, 2025



ALPOA Lake Health Committee

• Committee purpose

To support a thriving and healthy lake ecosystem that includes the lake, lake shoreline, aquatic plants and wildlife.



• Committee members

- Peggy Kay- Chairperson
- Gloria Day – Secretary
- Maureen Carey
- Diane Sams
- Ron Sams
- Mark Kay
- Gary Kay
- Dan Kocis
- Rick Oakley



What's new?

- **Loon Update**

- One chick hatched on AuSable Lake
- No chick on Little AuSable Lake platform to be re-planted
- New juvenile introduced



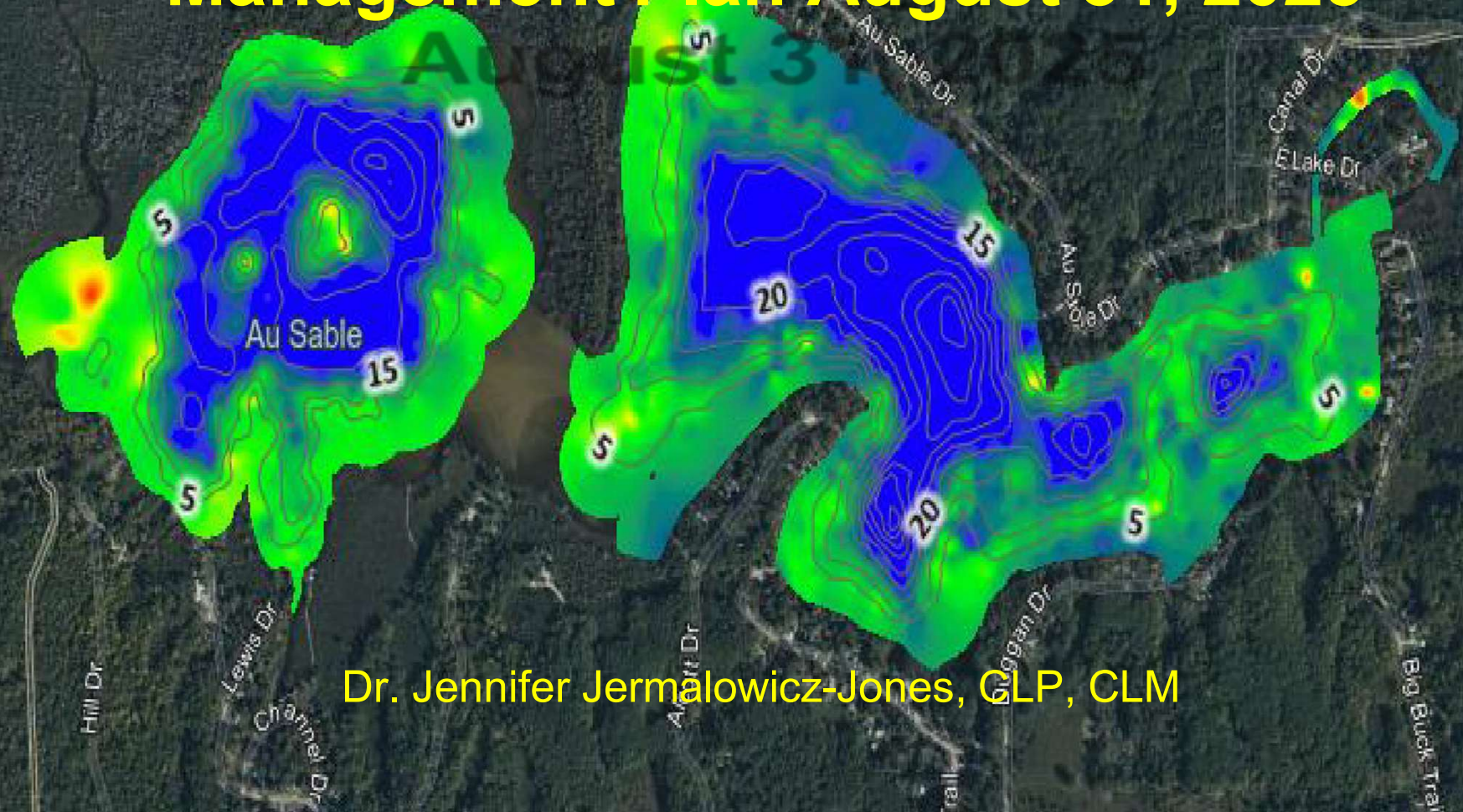
- **Aquatic Plant Survey completed on June 25th**

Dr. Jennifer Jermalozicz-Jones, CLP, CLM



- **Owner of Restorative Lake Sciences** – 2012 – present
- **Michigan State University** - Doctor of Philosophy (PhD), Water Resource Management (Resource Development), Environmental Policy Doctor of Philosophy (PhD) 2017
- **Grand Valley State University** - M.S., Water Resources/Aquatic Ecology M.S. 2007
- **Michigan Technological University** - B.S., Limnology/Biological Sciences 1998

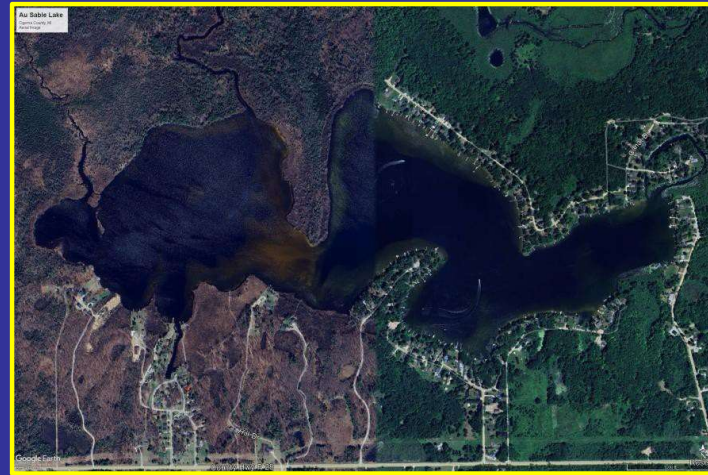
Au Sable Lake Aquatic Vegetation Management Plan August 31, 2025

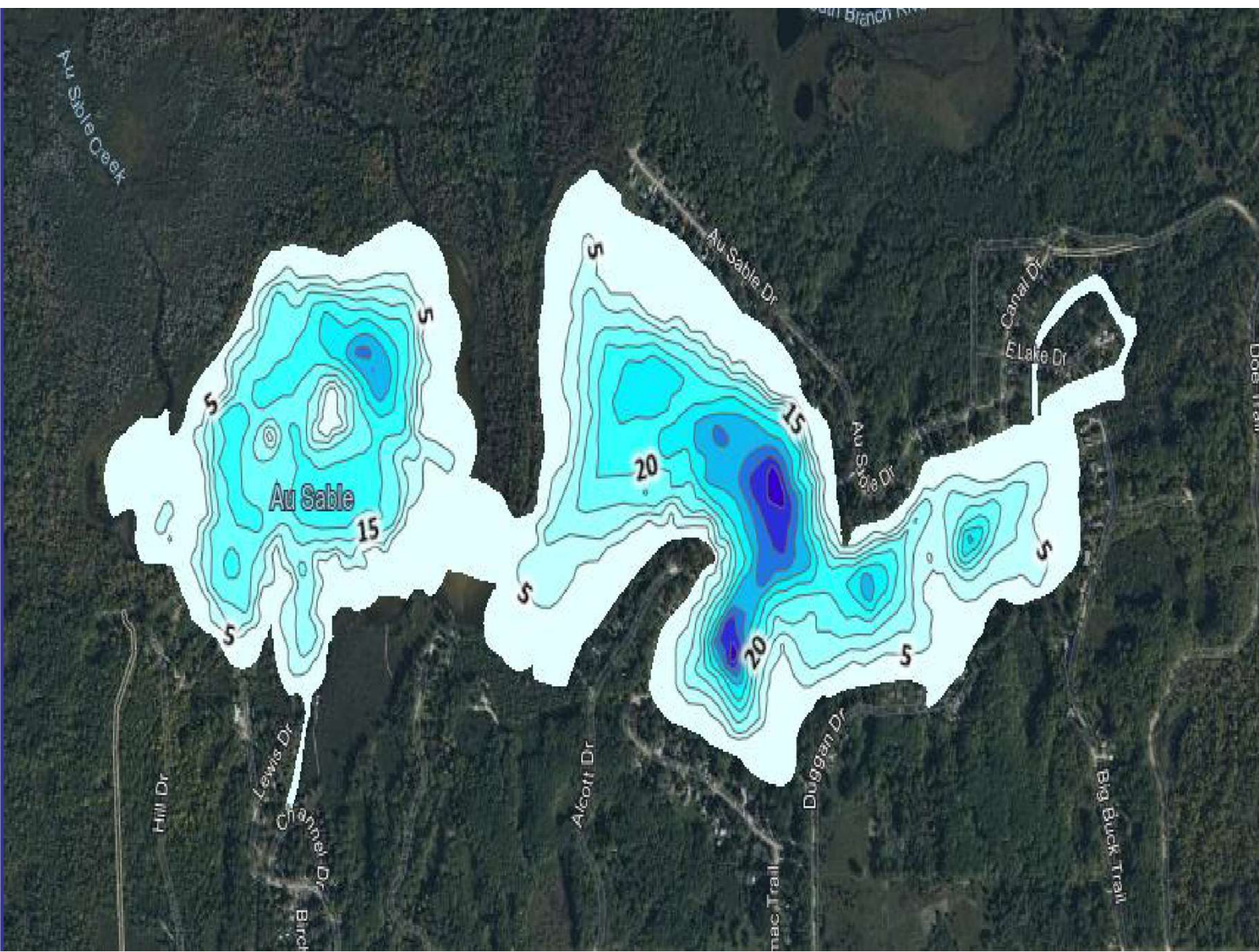


Dr. Jennifer Jermalowicz-Jones, GLP, CLM

Au Sable Lake Characteristics

- Surface area = 271 acres
- Maximum depth = 49 feet
- 2 deep basins
- Legal lake level established
- Great fishing and swimming lake
- 27 native aquatic plant species
- Very good water quality (mesotrophic)
- 3 invasive aquatic plant species





AU SABLE LAKE AQUATIC VEGETATION

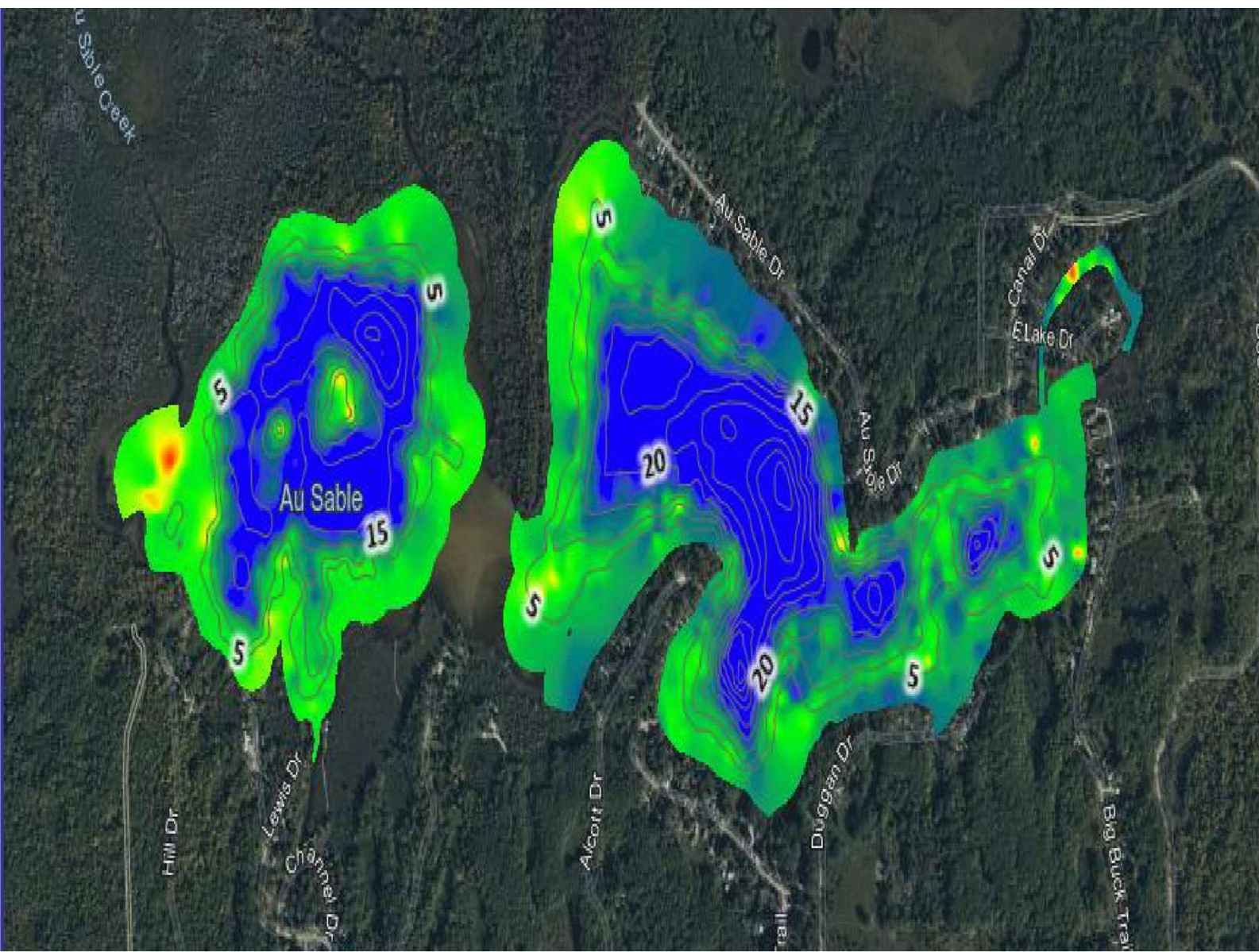


Table 3. Au Sable Lake aquatic vegetation biovolume by category percent cover of each category (relative cover on June 23, 2025).

Biovolume Cover Category	% Relative Cover of Bottom by Category
0-20%	69.5
20-40%	28.3
40-60%	2.1
60-80%	0.1
>80%	0.0

AuSable Lake 6-23-25

Ogemaw Co.

Legend

Plant Sampling Locations

Google Earth

Image © 2025 Airbus

2000 ft

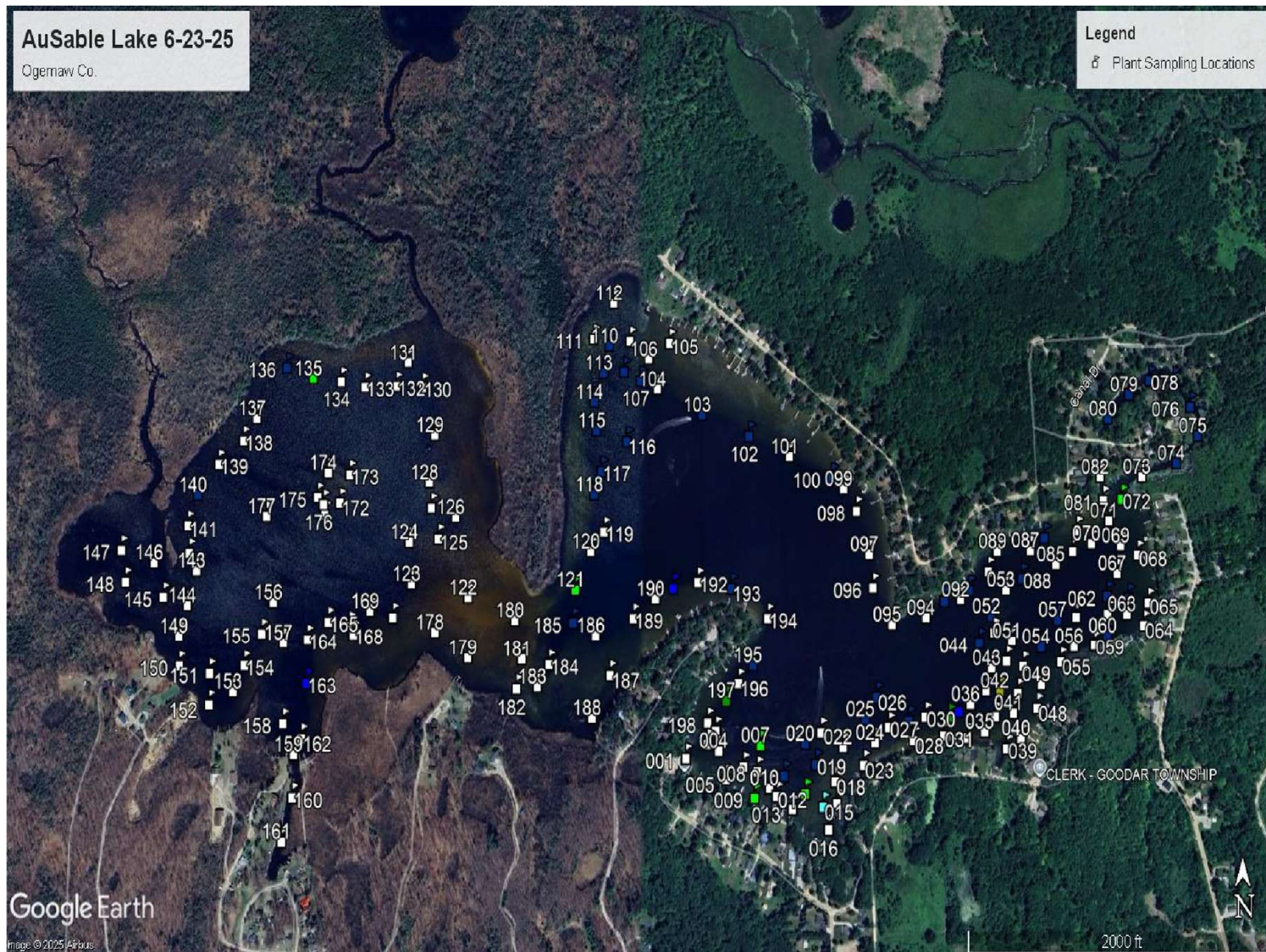
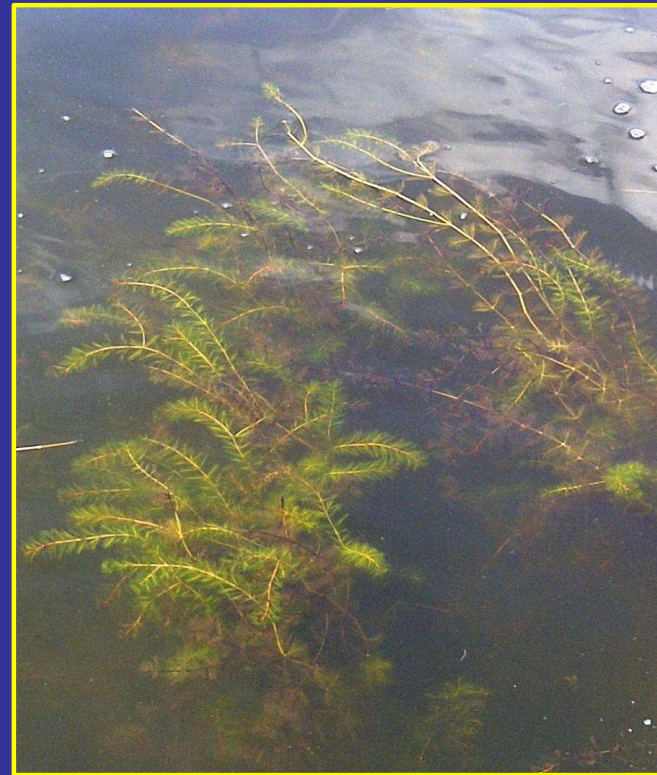


Table 5. Au Sable Lake native aquatic plant species frequency (June 23, 2025).

<i>Native Aquatic Plant Species Name</i>	<i>Aquatic Plant Common Name</i>	<i>Frequency (% Sampling Locations Found)</i>
<i>Chara vulgaris</i>	Muskgrass	53.0
<i>Stuckenia pectinatus</i>	Thin-leaf Pondweed	9.1
<i>Potamogeton zosteriformis</i>	Flat-stem Pondweed	41.4
<i>Potamogeton gramineus</i>	Variable-leaf Pondweed	18.2
<i>Potamogeton praelongus</i>	White-stem Pondweed	1.5
<i>Potamogeton richardsonii</i>	Clasping-leaf Pondweed	3.0
<i>Potamogeton illinoensis</i>	Illinois Pondweed	40.4
<i>Potamogeton amplifolius</i>	Large-leaf Pondweed	3.5
<i>Potamogeton pusillus</i>	Small-leaf Pondweed	0.5
<i>Vallisneria americana</i>	Wild Celery	3.5
<i>Myriophyllum sibiricum</i>	Northern Watermilfoil	2.5
<i>Myriophyllum heterophyllum</i>	Variable Watermilfoil	60.6
<i>Ceratophyllum demersum</i>	Coontail	3.0
<i>Elodea canadensis</i>	Common Waterweed	36.4
<i>Utricularia vulgaris</i>	Common Bladderwort	33.8
<i>Drepanocladus revolvens</i>	Scorpion Moss	0.5
<i>Najas guadalupensis</i>	Southern Naiad	18.2
<i>Nymphaea odorata</i>	White Waterlily	30.8
<i>Nuphar variegata</i>	Yellow Waterlily	15.7
<i>Spirodela</i> sp.	Common Duckweed	0.5
<i>Lemna minor</i>	Lesser Duckweed	0.5
<i>Typha latifolia</i>	Cattails	7.1
<i>Schoenoplectus acutus</i>	Bulrushes	24.7
<i>Arrow arum</i>	Arrowhead	16.7
<i>Iris</i> sp.	Wild Iris	6.6
<hr/>		
<i>Decodon verticillatus</i>	Swamp Loosestrife	17.2
<i>Sparganium americanum</i>	Bur reed	0.5

Myriophyllum spicatum (Eurasian watermilfoil)

- Exotic from Eurasia
- Early season canopy-forming growth
- Shades light from native macrophytes
- Creates a high BOD, depletes oxygen
- Can harbor pathogens and degrade water quality



Problems Caused by Eurasian Milfoil Overgrowth:



- Displacement and elimination of native vegetation
- Degradation of fishery and wildlife habitat
- Depletion of adequate dissolved oxygen
- Impedance of recreation and navigation
- Threat to other nearby lakes
- Decline in property values







Solutions used for Eurasian Watermilfoil Control:



- Mechanical removal via harvesting (not recommended)
- DASH boat (recommended)
- Herbicides (often controversial but common)

Curly-leaf Pondweed (*Potamogeton crispus*)

- Exotic from Eurasia
- Early season canopy-forming growth
- Shades light from native macrophytes
- Spreads by turion seed pods
- May grow together with EWM



Au Sable Lake

Ogemaw County, MI
Curly-Leaf Pondweed Locat on Map
25 June 2025

Legend

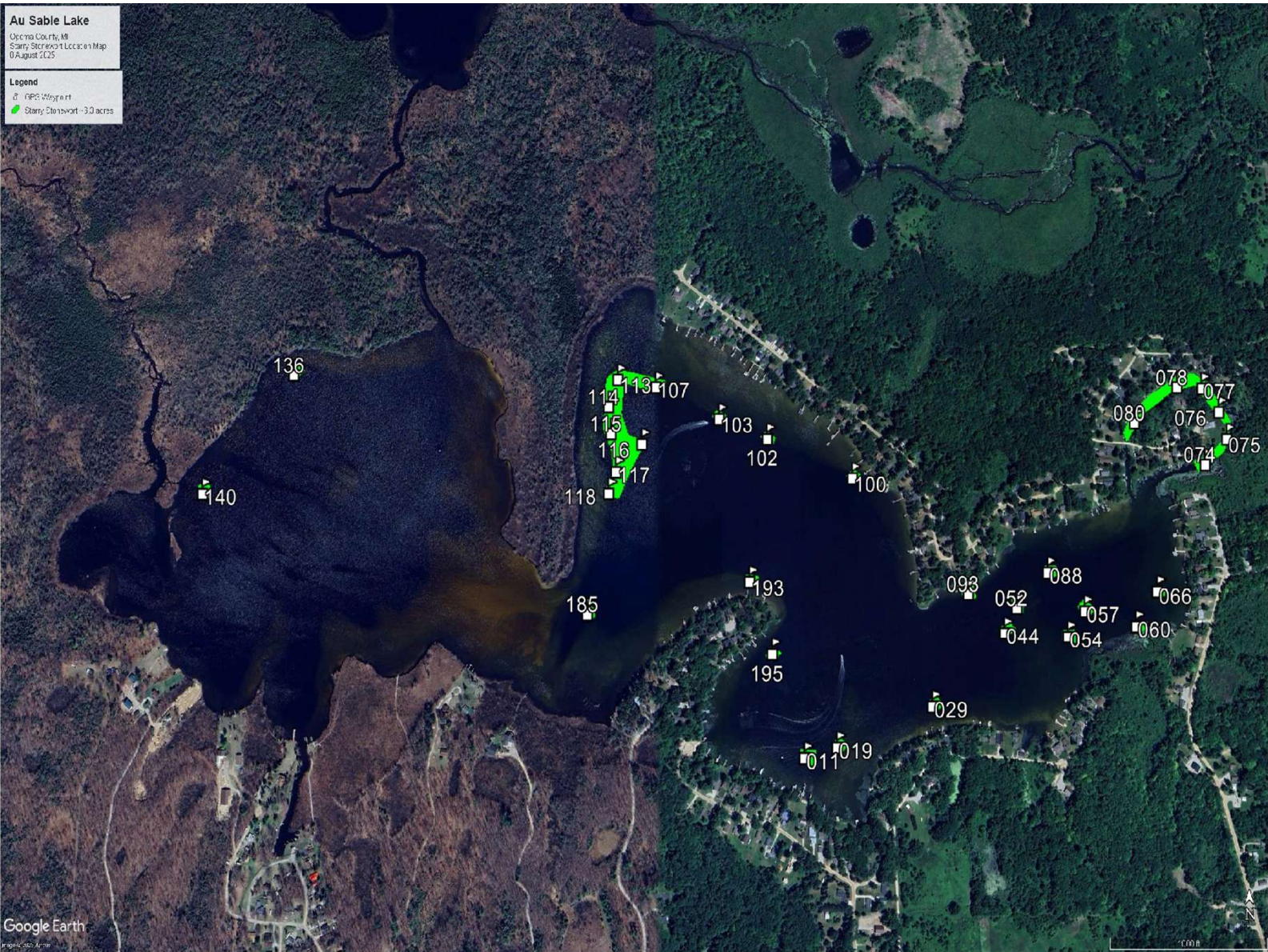
- Curly-Leaf Pondweed & Spiny Stonewort Mix ~ 0.7 acres
- Curly-Leaf Pondweed & Spiny Stonewort ~ 0.2 acres
- Curly-Leaf Pondweed & Spiny Stonewort ~ 0.2 acres
- Curly-Leaf Pondweed & Spiny Stonewort ~ 0.2 acres



Starry Stonewort (*Nitellopsis obtusa*)

- Exotic, invasive
- Macro alga
- Shades light from native macrophytes
- Spreads by bulbils
- Reduces fish spawning habitat
- Prefers clear waters with higher alkalinity
- DASH removes bulbils and reduces macro alga over time. Algaecides are very temporary





AU SABLE LAKE WATER QUALITY

Table 2. Au Sable Lake water quality parameter data collected in the deepest basin on July 1, 2025.

<i>Depth</i> <i>m</i>	<i>Water</i> <i>Temp</i> °C	<i>DO</i> <i>mg L⁻¹</i>	<i>pH</i> <i>S.U.</i>	<i>Cond.</i> <i>µS cm⁻¹</i>	<i>TDS</i> <i>mg L⁻¹</i>	<i>TP</i> <i>mg L⁻¹</i>	<i>TKN</i> <i>mg L⁻¹</i>	<i>Chl-a</i> <i>µg L⁻¹</i>	<i>Secchi</i> <i>ft.</i>
0	26.2	8.0	8.5	266	170	0.010	0.6	3.0	12.5
1.0	26.2	8.2	8.5	266	170	--	--	--	--
2.0	26.2	8.2	8.5	266	170	--	--	--	--
3.0	24.8	8.2	8.4	270	173	--	--	--	--
4.0	19.9	7.7	8.3	282	180	--	--	--	--
5.0	15.3	7.3	8.2	287	183	--	--	--	--
6.0	12.8	3.2	8.0	287	183	--	--	--	--
7.0	11.4	0.8	7.8	290	186	0.014	0.7	--	--
8.0	10.5	0.4	7.6	292	187	--	--	--	--
9.0	9.7	0.1	7.6	294	188	--	--	--	--
10.0	9.0	0.0	7.6	296	189	--	--	--	--
11.0	8.7	0.0	7.6	297	190	--	--	--	--
12.0	8.6	0.0	7.6	298	190	--	--	--	--
13.0	8.6	0.0	7.6	298	191	--	--	--	--
14.0	8.6	0.0	7.6	299	192	0.020	0.9	--	--

Lake Management Activity	Primary Goal	Secondary Goal	Best Locations to Use
DASH for Eurasian Watermilfoil	To reduce % cover of EWM throughout lake	To protect native aquatic plant biodiversity	ONLY where EWM is located
DASH for Starry Stonewort control	To stop it from spreading to other areas of the lake	To protect native aquatic plant biodiversity	ONLY where SS is located
Benthic Barriers/Weed Rollers	To prevent germination of nuisance weeds in beach areas	To reduce dependency on chemicals in nearshore areas	Beach areas only
Lake Vegetation Surveys/Scans	To determine % cover by invasives and use as data tool	To compare year to year reductions in nuisance vegetation areas	Entire lake, annually and follow-ups as needed
Water Quality Monitoring	To determine trophic status of the lake annually	To compare trend in water quality parameters with time	Main Lake deepest basin or both deep basins

Proposed Au Sable Lake Improvement Item	Year 1 Costs	Years 2-5 (Annual) Costs
Professional services (limnologist management of lake, oversight, water quality, processing, education) ¹	\$8,500	\$9,000
EWM and SSW treatment with DASH (other methods available)	\$15,500	\$15,500
Contingency ³	\$2,400	\$2,450
Total Annual Estimated Cost	\$26,400	\$26,950

Questions?





ALPOA Committee Report –

Social

August 31, 2025



ALPOA Social Committee

- Committee purpose
 - The purpose of the social committee is to support the boat parade and initiate new social activities such as croquet tournament, golf tournament, Euchre club, dining club, and other social events for property owners and families.
- Committee membership
 - Julie Oakley - Chair
 - Laurie Davia - Secretary
 - Patt Kocis
 - Jeremy Lane
 - Katie Hinderliter
 - Cathy Walling
 - Dan Kocis
 - Rick Oakley



ALPOA Social Committee



2025 Events

- **Light of the Lake for Unity- Sun. August 31**
- **Faull out of Summer – Fri. October 3**

2026 Events

- **Winter Event** (to be announced)
- **Faull Inn Social Night** Thursday, May 21
- **Corn Hole Tournament** Friday, June 19
- **Kids Fishing Derby** Saturday, June 20
- **Boat Parade** Saturday, July 4 Red/White/Blue
- **Euchre Tournament** Thursday, July 23
- **Boat-in Movie** Saturday, August 8 - Grease
- **AuSable Lake QUAD** Saturday, August 22
- **6th Annual Cocktail Party @ Point** Thursday, Sept. 3
- **Light Up the Lake Unity Night** Sunday, Sept. 6
- **Faull Out of Summer – Friday, October 2**

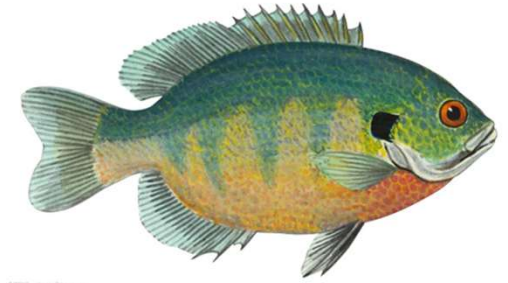


ALPOA Committee Report –

Fishing
August 31, 2025

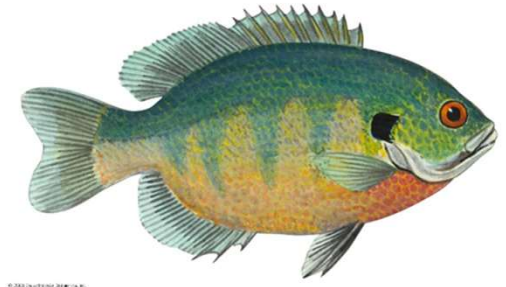


ALPOA Fish Committee



- Committee purpose
 - Protect, maintain and improve the AuSable Lake fishery for AuSable Lake property owners.
 - Seek support from DNR to re-start a stocking program for our lake.
- Committee membership
 - Brent Edgerton - Chair
 - JB (Joe) Banach - Secretary
 - Brian Billeter
 - Laurie Davia
 - Diane Sams
 - Ron Sams
 - Rick Oakley
 - Craig Williams
 - Andy Burk

ALPOA Fish Committee Update



- 2nd Annual Kids Fishing Derby
- Working with our lake DNR Biologist, Matt Klungle
 - Proposed Pike size limit change to no more than 5 pike & only one over 24 inches
 - Proposed a rock reef on west side of lake for spawning
 - Proposed “Wisconsin Fish Sticks” west side of lake for small fish
 - Support for stocking lake again with walleye
 - Support for 2026 DNR Fish Survey
- Fundraising > charter a fundraising committee
- Fish survey data collection

6. New Business

When speaking, please identify yourself and where on the lake you're located.

A. Opportunities to increase ALPOA Membership and Committee Participation

- Use of holiday weekends?
- Zoom?

B. Increase ALPOA Board representation by Adding Three (3) "At Large" Directors.

- Motion to revise Article 4 of the ALPOA Bylaws revised to to read:

"Officers to consist of a President, one (1) Vice President, Secretary, and Treasurer, **and up to three (3) "At Large" Directors.**"

7. Member Comments

When speaking, please identify yourself and where on the lake you're located.

Next Meeting

- 10:00 AM, Sunday, May 24, 2026
 - Kocis Barn, 3060 Sumac Trail



ALPOA Late Summer Meeting

Kocis Barn- 3060 Sumac Trail

10:00 AM August 31, 2025

